



# Superior Technology & Best Quality at Cost Effective Price



**READYMIX CONCRETE BATCHING PLANT (RMC)  
WITH FULLY AUTOMATIC PLC BASED CONTROL SYSTEM**

Available Models are 20 CM/HOUR,  
30 CM/HOUR, 45 CM/HOUR, and 60 CM/HOUR.

[www.kditechnology.com](http://www.kditechnology.com)

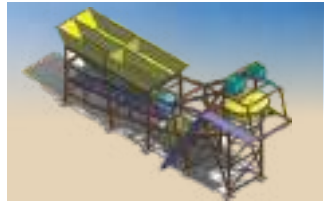
**BASE FRAME :-**

Single Piece Chasis Made from IS – 2062 Grade-A Mild Steel Structural Steel, which is Sturdy & Rigid with High Quality Welding.



**BIN FEEDER WITH EXTENSIONS :-**

Feeder is in line 2x2 Cross Bins to make 4 Bins, Each Bin provided with Discharge Gate. For Higher Capacity Plant Inline 4 Bin Feeder will be Provided. 3 Bins for Aggregate & 1 Bin for Sand to ensure proper Mixing of Aggregate & Sand.



**CONVEYOR :-**

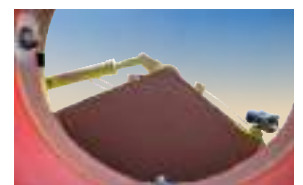
There are Two Conveyors.

1. Gathering Conveyor: - It is Called Collecting cum weighing belt conveyor Placed at the bottom side of 4 Bin Feeder. It is driven by Adequate drive and suspended on 4 load cells for proper weighing of material released from each bin. This Belt conveyor is feeding the weighed material to the charging conveyor.
2. Charging Conveyor: - Charging Conveyor placed Angular to transfer weighed Mixture of aggregate & Sand up to Pan Mixer.



**TURBO PAN MIXER :-**

It is driven by Heavy duty Gear Box with Suitable Drive Motor. Replaceable High Quality, High wear & tear resistant liner plates fixed inside the Mixer. Hydraulic discharge gate is provided with power pack unit. To allow Mix Material to come out Easily





**CEMENT HOPPER :-**

Separate Weighing hopper of Suitable Capacity is placed on the top side of pan mixer. It is attached with load cell electronic weigh batching system for cement with PLC based control.

**WATER HOPPER :-**

Separate Weighing hopper of Suitable Capacity is placed on the top side of pan mixer. It is attached with load cell electronic weigh batching system for water with PLC based control with water pump.

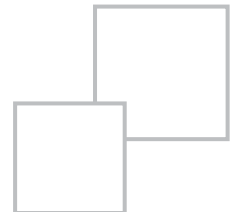


**CHEMICAL / ADDITIVE CONTAINER :-**

Separate Weighing container Additive pump with piping, Monoblock pump with require suitable accessories electronic Weigh batching system for Chemical / Additive with PLC based Control.

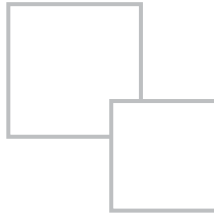
**AIR COMPRESSOR :-**

Suitable Standard Make Air compressor is provided.



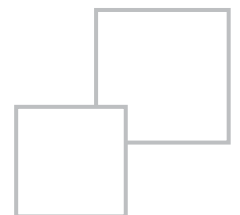
**CEMENT SCREW CONVEYOR WITH MANUAL FEEDING HOPPER :-**

WAM ( Italy ) / Equivalent make heavy duty cement screw conveyor with suitable drive unit for direct feeding of cement into weighing 2.5 TON hopper from manual feeding hopper. Manual Feeding Hopper of 2.5 TON Capacity is provided



**CONTROL PANEL :-**

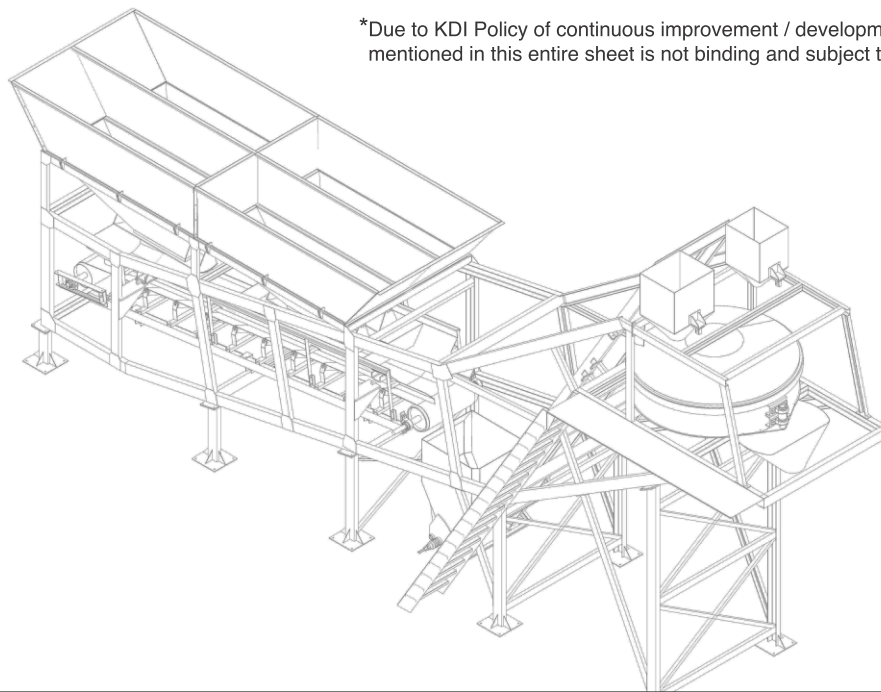
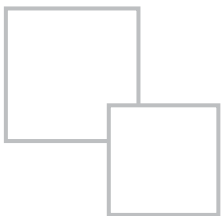
- PLC based with 5.7" multi colour touch screen LCD Display.
- Inbuilt serial printer interface.
- Powerful recipe management (Total 99 Recipe).
- Online batch weighing information of individual and total (in kg.)
- Consumption Record of all ingredients.
- User Friendly Operation interface.
- Push Button Station for Manual Operation.
- Online Print out system with printer.
- All Electric cables (Armed and Flexible) are prepacked wiring system with suitable connectoe but except main power source cable.



**Note:-**

Skip Hoist Bucket/Conveyor options are available. At KDI we have Designed and Developed The Most Economical and Efficient RMC plant for recent needs of modern civil construction.

MODEL	RMC 20	RMC 30	RMC 45	RMC 60
Output Capacity	20 CM / HR	30 CM / HR	45 CM / HR	60 CM / HR
Mixer Unit	Turbo Pan	Turbo Pan	Twin Shaft	Twin Shaft
Main Mixer Reduction Gear Box	Imported Planetary Gear Box with Suitable Reduction Ratio & Drive Unit.			
Main Drive	20 HP Elec. Motor	30 HP Elec. Motor	40 HP Elec. Motor	50 HP Elec. Motor
Storage Bin & Capacity*	2 x 2 Cross 4 Bin 12 CM	2 x 2 Cross 4 Bin 14 CM	In Line 4 Bin 40 CM	In Line 4 Bin 60 CM
Aggregate Weighing System	Digital Load cell based Weighing PLC Controlled.			
Sand Weighing System	Digital Load cell based Weighing PLC Controlled.			
Batch Feeding System	Through inclined Belt Conveyor/Inclined skip Bucket Hoist Type			
Cement Feeding System	Conveying through Manual Feeding Hopper through Cement Screw Conveyor.			
Water Feeding System	Digital Load cell based Weighing PLC Controlled.			
Chemical/Additives Feeding Sys.	Digital Load cell based Weighing PLC Controlled.			
Control Panel	Full Automatic PLC Based Control Unit.			
Control Cabin	Provided			
Concrete Discharge Height*	2.3 MTR	2.3 MTR	2.3 MTR	2.3 MTR
Total Power (HP)*	54.5 HP	64.5 HP	97. HP	112. HP

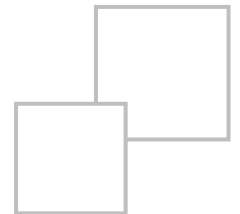


\*Due to KDI Policy of continuous improvement / development, the technical data mentioned in this entire sheet is not binding and subject to change without notice.



## SKIP HOIST

KDI make RMC Plant has two Options.  
The skip hoist OR belt arrangement option for loading of weighed aggregate & Sand in mixer.  
Skip hoist bucket track made rigid & sturdy fabricated, to travel bucket from gathering conveyor to mixer.  
Skip bucket carrying weighed aggregate & sand mixture to load in mixer.  
Skip bucket is driven by single brake Motor with two speed geared motor.  
Steel wire rope to Lower/Raising bucket on track.



## **KHODIYAR DEVELOPERS & INFRASTRUCTURE PVT. LTD.**

Regd. Off. & Factory : 110, G.I.D.C.-II, Dediyaan, Mehsana, State – Gujarat, India.  
Ph. : +91-2762-224210, 224107, 098791 12730, Mob. 098250 82182